

NOTE:
EXISTING WATERMAIN STUBS WILL REQUIRE SWABBING, FLUSHING AND SAMPLING WORK TO BE COMPLETED BY REGION OF HALTON STAFF AT THE DEVELOPER'S EXPENSE.

NOTE:
SERVING AND GRADING DESIGN FOR FUTURE LOTS LANDS SHOWN ON THE DRAWINGS ARE CONCEPTUAL, WHICH ARE TO BE FURTHER REVIEWED / FINALIZED UPON FUTURE DEVELOPMENT.

ANY AREAS DISTURBED DURING CONSTRUCTION TO BE RESTORED TO THE ORIGINAL CONDITION OR BETTER TO THE SATISFACTION OF THE AUTHORITIES HAVING JURISDICTION.

CONTRACTOR TO VERIFY THE PRECISE LOCATIONS AND INVERT ELEVATIONS OF EX. UNDERGROUND SERVICES AND EX. UTILITIES PRIOR TO STARTING CONSTRUCTION.

WRITTEN PERMISSION REQUIRED FOR WORK ON ADJACENT LANDS.

NOTE:
ALL EXISTING BUILDINGS, BARN, POST & WIRE FENCES, TREES, UTILITY WIRES, POLES AND CULVERTS WITHIN LOTS AND BLOCKS TO BE REMOVED, UNLESS OTHERWISE NOTED.

NOTE:
INSULATION REQUIRED FOR WATERMAIN / WATER SERVICES WHERE THE SEPARATION BETWEEN WATERMAIN / WATER SERVICES AND OTHER SERVICES AND STRUCTURES IS LESS THAN 1.2m AND THE COVER IS LESS THAN 1.7m. (SEE REGION STANDARD #4-408.010)

NOTE:
BARRICADES AND SIGNAGE TO BE REMOVED ONLY AFTER WRITTEN DIRECTION IS PROVIDED BY THE TOWN OF MILTON ENGINEERING DEPT.

NOTE:
FOR DETAIL NOTES, REFER TO DRAWING No. 1.

THIS PLAN IS INTENDED TO ASSIST THE CONTRACTOR IN THE LAYOUT AND CONSTRUCTION OF THE SILTATION CONTROL FEATURES ONLY. THIS DRAWING SHALL NOT BE USED FOR CONSTRUCTION OF SITE SERVICES.

ALL EROSION & SEDIMENT CONTROL MEASURES SHALL BE IN PLACE PRIOR TO THE START OF ANY EARTHWORKS OPERATIONS.

EROSION AND SEDIMENT CONTROL NOTES:

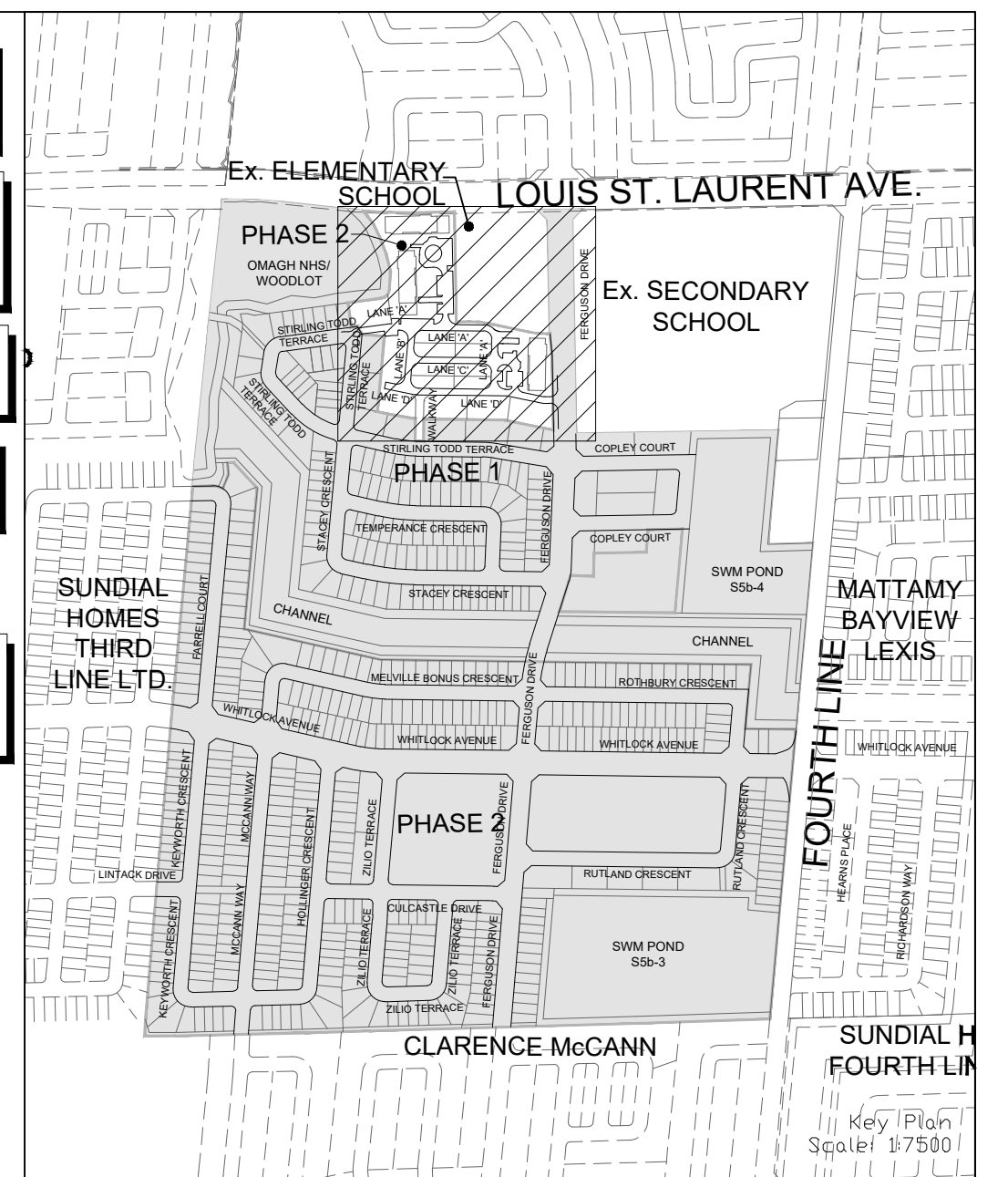
1. EROSION AND SEDIMENT CONTROLS ARE REQUIRED IN ACCORDANCE WITH THE TOWN OF MILTON BY-LAW 104-2007, AS AMENDED. GRADING IS PROHIBITED UNTIL THE ABOVE BY-LAW IS SATISFIED.
2. PRIOR TO TOPSOIL STRIPPING, EARTHWORKS, OR UNDERGROUND CONSTRUCTION, EROSION AND SEDIMENT CONTROLS SHALL BE IMPLEMENTED TO THE SATISFACTION OF THE AUTHORITY HAVING JURISDICTION.
3. SEDIMENT CONTROL FENCE SHALL BE CLEANED AND MAINTAINED IN GOOD REPAIR BY CONTRACTOR.
4. SEDIMENT CONTROL FENCE TO REMAIN IN PLACE UNTIL THE WORKING AREA HAS BEEN STABILIZED AND REVEGETATED.
5. ACCUMULATED SEDIMENT TO BE REMOVED OFF SITE PRIOR TO THE REMOVAL OF SEDIMENT CONTROL FENCE.
6. CONTRACTOR TO INSTALL MUD MAT AT THE CONSTRUCTION ACCESS IN ORDER TO PREVENT THE TRACKING OF MUD ONTO THE ADJACENT ROADS IN ACCORDANCE WITH THE TOWN OF MILTON BY-LAW 160-2005. MUD MAT TO BE A MINIMUM OF 30m LONG, 5m WIDE AND SHALL CONSIST OF 0.45m OF 50mm CLEAR STONE FOR FIRST 15m WITH REMAINING 15m CONSISTING OF 150mm RIP RAP.
7. IN ACCORDANCE WITH THE TOWN OF MILTON BY-LAW 160-2005, THE CONTRACTOR SHALL CLEAN THE ADJACENT ROADS ON A REGULAR BASIS TO THE SATISFACTION OF THE AUTHORITY HAVING JURISDICTION AND/OR IMMEDIATELY UPON NOTIFICATION BY THE AUTHORITY HAVING JURISDICTION.
8. FILTER FABRIC TO BE PLACED IN ALL STREET AND REAR LOT CATCHBASINS. THESE SILT TRAPS ARE TO BE CLEANED REGULARLY AND INSPECTED AFTER EACH RAINFALL BY THE CONTRACTOR AND NOT TO BE REMOVED UNTIL SUCH TIME AS THE CURBS ARE CONSTRUCTED AND BOULEVARDS ARE SODDED OR BACKYARDS ARE GRADED AND SODDED. SEDIMENT TO BE REMOVED AND FILTER CLOTH REPLACED AS NECESSARY.
9. ALL DISTURBED GROUND OR TOPSOIL STOCKPILE LEFT INACTIVE FOR MORE THAN 30 DAYS SHALL BE STABILIZED BY SEEDING, SODDING, MULCHING OR COVERING, OR OTHER EQUIVALENT CONTROL MEASURE, UNLESS OTHERWISE AUTHORIZED BY THE TOWN OF MILTON.
10. ALL EROSION AND SEDIMENT CONTROL DEVICES ARE TO BE INSPECTED BY THE ENVIRONMENTAL CONSULTANT ONCE PER WEEK AND AFTER EACH RAINFALL OF 1 cm OR GREATER TO ENSURE THAT THEY ARE IN PROPER WORKING CONDITION.

CONSERVATION OF HALTON SPECIFIC SEDIMENT & EROSION CONTROL REQUIREMENTS

1. ENVIRONMENTAL INSPECTORS USED ON THE PROJECT ARE TO BE QUALIFIED PROFESSIONALS TRAINED IN SEDIMENT AND EROSION CONTROLS (CERTIFIED INSPECTOR OF SEDIMENT AND EROSION CONTROL (CISEC), CERTIFIED PROFESSIONAL ENGINEER IN EROSION AND SEDIMENT CONTROL (PEESC) OR APPROVED EQUIVALENT).
2. THE DEVELOPER IS RESPONSIBLE FOR ENSURING THAT THE EROSION AND SEDIMENT CONTROLS ARE MAINTAINED AND OPERATING AS INTENDED, INCLUDING MAKING FIELD ADJUSTMENTS AS NECESSARY, TO THE SATISFACTION OF THE TOWN OF MILTON AND CONSERVATION HALTON, TO ENSURE ADEQUATE EROSION AND SEDIMENT CONTROL PROTECTION.
3. THE CONTRACTOR SHALL BE RESPONSIBLE FOR THE PROPER INSTALLATION, MAINTENANCE AND REMOVAL OF ALL TEMPORARY EROSION AND SEDIMENT CONTROL MEASURES DURING CONSTRUCTION, AS DIRECTED BY THE ENGINEER.
4. ADDITIONAL EROSION AND SEDIMENT CONTROL MEASURES MAY BE REQUIRED AND SHALL BE DETERMINED BY THE ENGINEER OR ENVIRONMENTAL CONSULTANT.
5. CONSTRUCTION SHOULD BE AVOIDED DURING UNUSUALLY WET, RAINY OR WINTER THAW CONDITIONS.
6. MACHINERY IS TO ARRIVE ON SITE IN A CLEAN CONDITION (INCLUDING FREE OF MUD / SOIL / DIRT FROM OTHER LOCATIONS, INCLUDING CLEAN WHEELS / TIRES / TRACKS) AND IS TO BE MAINTAINED FREE OF FLUID LEAKS.
7. NO CONSTRUCTION ACTIVITY OR MACHINERY SHALL INTRUDE BEYOND THE SILT FENCE. ALL CONSTRUCTION VEHICLES SHALL LEAVE THE SITE AT THE DESIGNATED LOCATION SHOWN ON THE PLAN.
8. THE CONTRACTOR MUST HAVE SEVERAL SPILL RESPONSE KITS ON-SITE AT ALL TIMES.
9. THE ESC STRATEGIES ON THESE PLANS ARE NOT STATIC AND MAY NEED TO BE UPGRADED / AMENDED AS SITE CONDITIONS CHANGE TO PREVENT SEDIMENT RELEASES TO THE NATURAL ENVIRONMENT.
10. ACCUMULATED SEDIMENT TO BE USED ON-SITE OR REMOVED OFF-SITE PRIOR TO THE REMOVAL OF THE SILT FENCE.

LEGEND

- PROPERTY LINE
- SILT FENCE
- LIMIT OF SITE PLAN
- STREET OR SILT PROTECTION (SEE DETAIL ON DRAWING 18)



NOT FOR CONSTRUCTION

TOPOGRAPHIC INFORMATION
TOPOGRAPHIC INFORMATION PROVIDED BY R-PE SURVEYING LTD., REFERENCE No. 22-049, CAD FILE No.22049tp05, SURVEY RECEIVED FEBRUARY 16, 2023.

LEGAL INFORMATION
SITE PLAN PROVIDED BY KNYMH INC., PROJECT NUMBER 21407, FOR GARITO BARBU TO PH 2 BLOCK 458, RECEIVED SEPTEMBER 11, 2024.
BENCHMARK (MINISTRY OF TRANSPORTATION)
No. 00819828155 ELEVATION = 185.351m

No.	DATE	DESCRIPTION	APPROVED
2.	24-10-07	C.J.M. 2nd SUBMISSION	
1.	24-04-05	C.J.M. 1st SUBMISSION	

SCALE: 1:500

APPROVALS

MUNICIPAL APPROVAL

DEVELOPMENT SERVICES

REGIONAL APPROVAL

LEGISLATIVE AND PLANNING SERVICES

600 Alden Road, Suite 606
Markham, Ontario, L3R 0E7
Tel: (905) 475-3080
Fax: (905) 475-3081
www.DSEL.ca

TOWN OF MILTON DEVELOPMENT SERVICES

The Regional Municipality of Halton

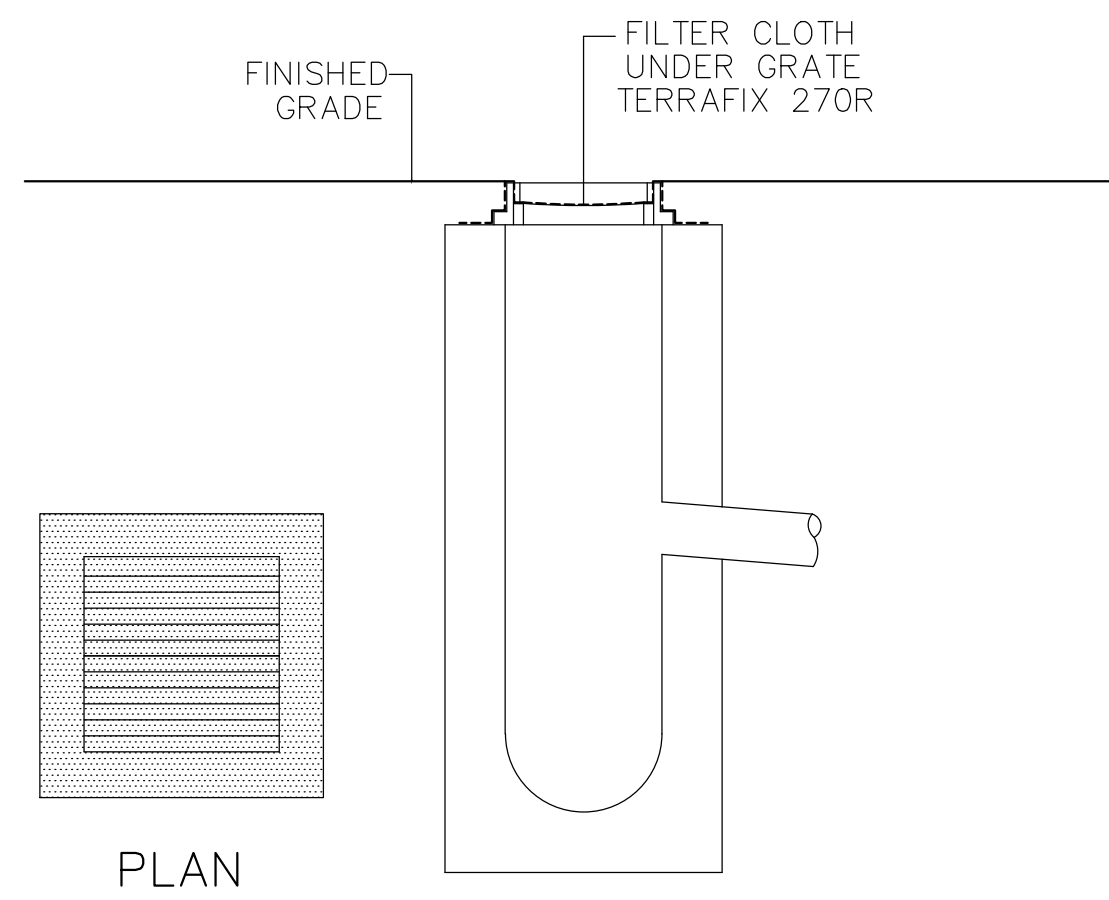
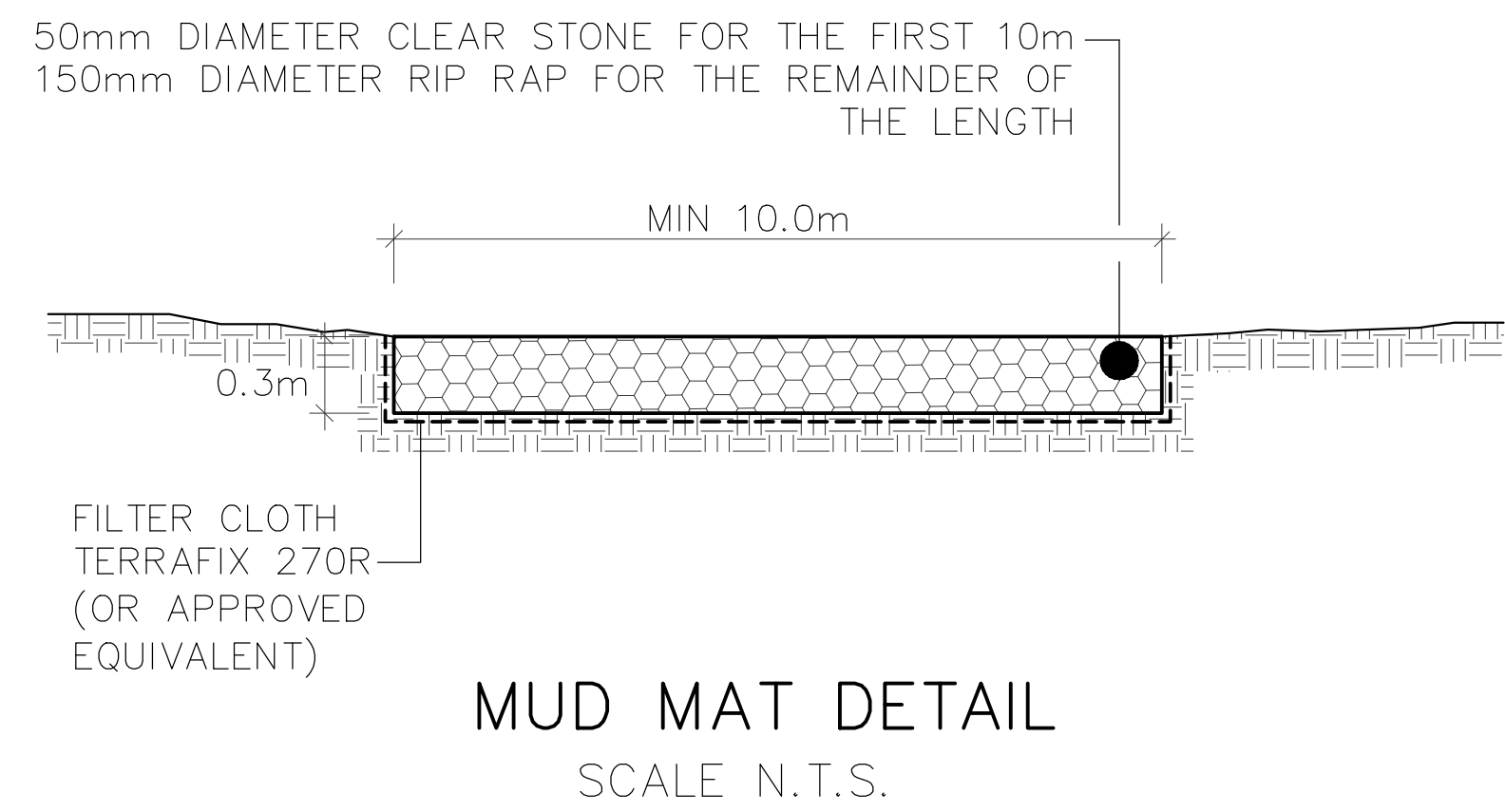
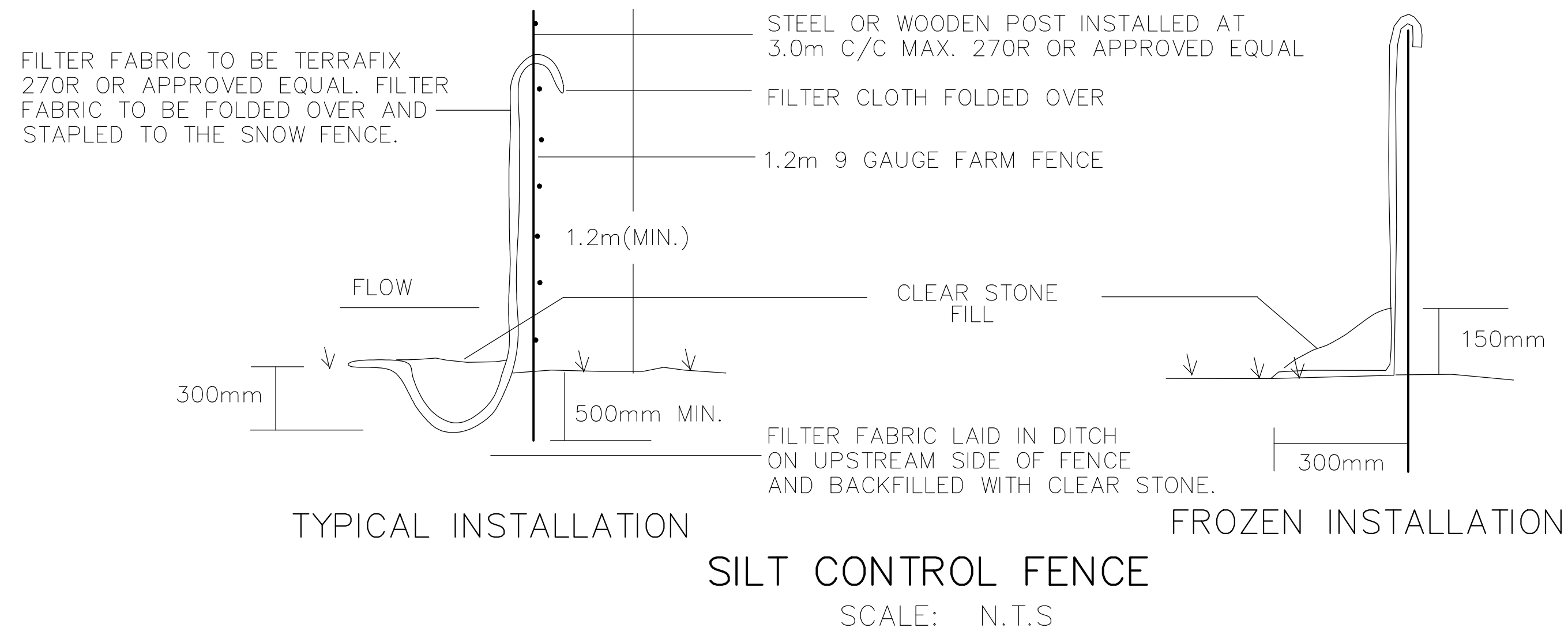
DEVELOPER: MATTAMY (BROWNBRIDGE) LIMITED

DEVELOPMENT MANAGER: mattamy HOMES

PROJECT: TOR SUBNODE SITEPLAN

TITLE: EROSION CONTROL PLAN © DSEL

DRAWN BY: H.P. CHECKED BY: E.G.
DESIGNED BY: H.C. CHECKED BY: C.J.M.
PROJECT NO. 24-1377 SHEET 17 OF 18



NOT FOR CONSTRUCTION

TOPOGRAPHIC INFORMATION
TOPOGRAPHIC INFORMATION PROVIDED BY R-PE SURVEYING LTD.,
REFERENCE No. 22-049, CAD FILE No.22049tp05, SURVEY
RECEIVED FEBRUARY 16, 2023.

LEGAL INFORMATION
SITE PLAN PROVIDED BY KNYMH INC., PROJECT NUMBER 21407,
FOR GARITO BARBUTO TOR PH 2 BLOCK 458, RECEIVED SEPTEMBER 11, 2024.
BENCHMARK (MINISTRY OF TRANSPORTATION)
No. 00819828155 ELEVATION = 185.351m

No.	DATE	BY	DESCRIPTION	APPROVED
2.	24-10-07	C.J.M.	2nd SUBMISSION	
1.	24-04-05	C.J.M.	1st SUBMISSION	

SCALE: NTS	REFERENCES
APPROVALS	FIELD NOTES
MUNICIPAL APPROVAL	BELL <input type="checkbox"/> HYDRO <input type="checkbox"/>
DEVELOPMENT SERVICES _____ DATE _____	GAS <input type="checkbox"/> CABLE <input type="checkbox"/>
	TRAFFIC <input type="checkbox"/> WATER <input type="checkbox"/>
REGIONAL APPROVAL	STAMP
DESIGN OF SANITARY, WATER SERVICES AND REGIONAL ROAD WORKS APPROVED SUBJECT TO DETAIL CONSTRUCTION CONFORMING TO HALTON REGION STANDARDS & SPECIFICATIONS & LOCALITIONAL APPROVAL FROM AREA MUNICIPALITY	
LEGISLATIVE AND PLANNING SERVICES _____ DATE _____	

DSEL 600 Alden Road, Suite 606
Markham, Ontario, L3R 0E7
Tel: (905) 475-3080
Fax: (905) 475-3081
www.DSEL.ca

MILTON TOWN OF MILTON
DEVELOPMENT SERVICES FILE No: XXXXXXX

Halton REGION The Regional Municipality of Halton REGION OF HALTON FILE No: XXXXXXX

DEVELOPER
MATTAMY (BROWNRIDGE) LIMITED

DEVELOPMENT MANAGER PROJECT
 TOR SUBNODE SITEPLAN

TITLE
EROSION CONTROL PLAN DETAILS © DSEL

DRAWN BY: H.P.	CHECKED BY: E.G.
DESIGNED BY: H.C.	CHECKED BY: C.J.M.
PROJECT NO. 24-1377	SHEET 18 OF 18