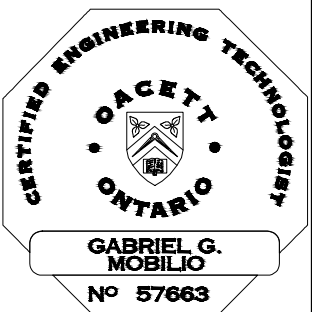


Lumen CONSULTING ENGINEERS
 LIGHTING - ELECTRICAL
 595 CITYVIEW BLVD, SUITE 204/205
 VAUGHAN, ON, CANADA L4H 3M7
 Tel: (905)417-6881 Fax:
 (905)417-6882
 www.e-lumen.ca
 International Inc.



Brutto Consulting
 113 Miranda Avenue, Toronto, ON M6B 3W8
 Tel: (647) 274-8031 Email: fforani@bruttoconsulting.ca

4.		
3.		
2.	2023/10/04	ISSUED FOR SPA
1.	2023/09/13	ISSUED FOR SPA
No.	DATE	ISSUE/REV.

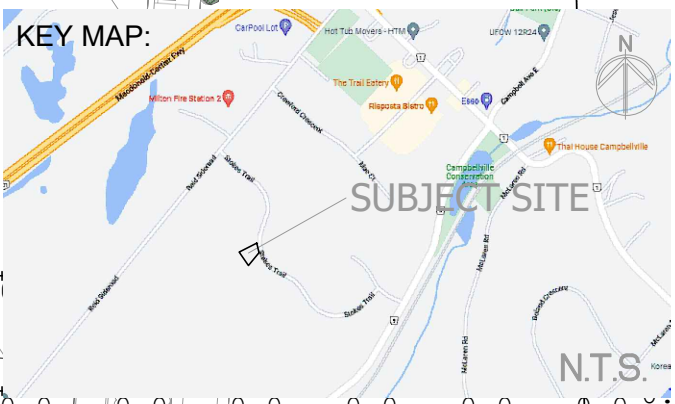
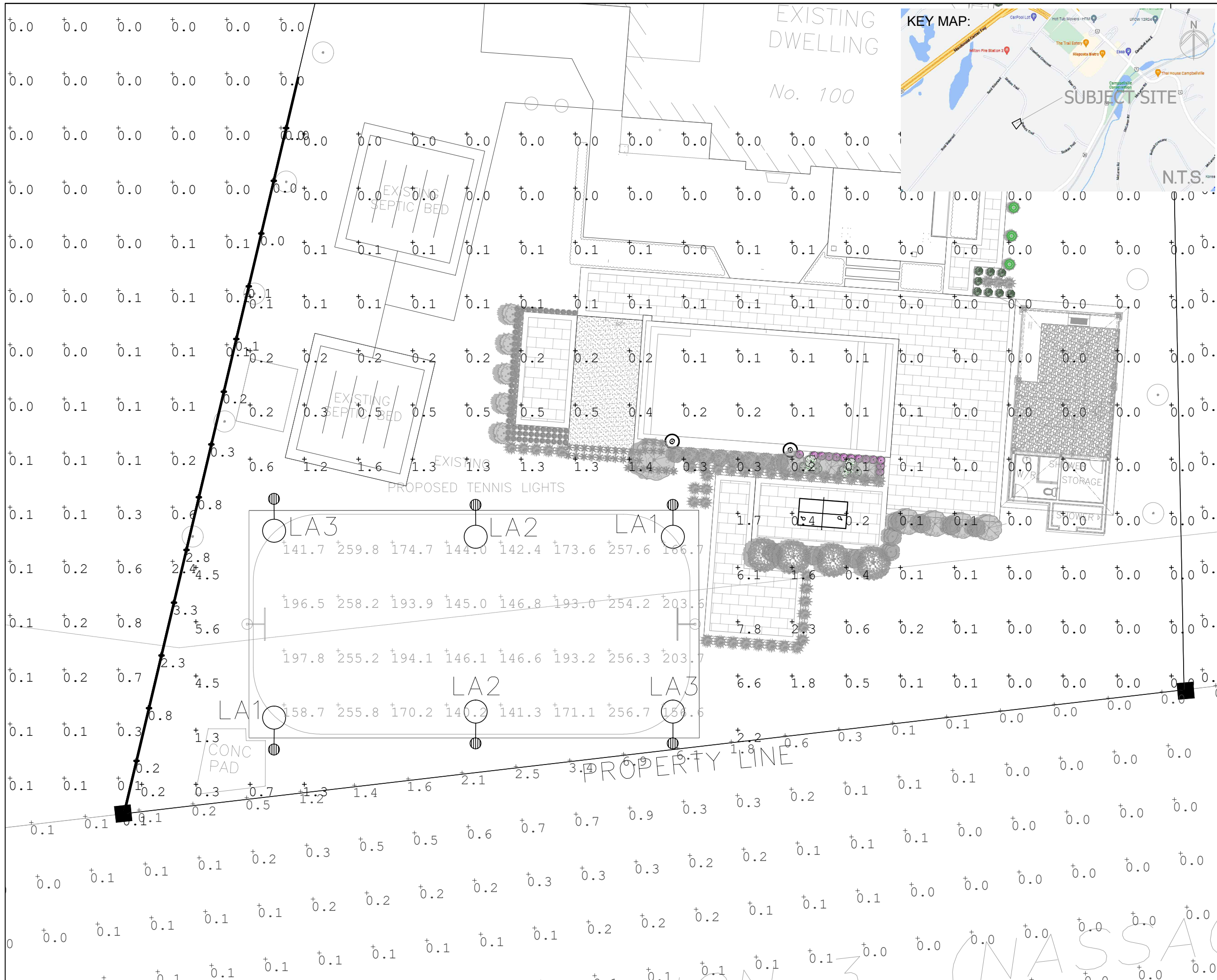
PROJECT
100 STOKES TRAIL

TITLE:
ELECTRICAL SITE PLAN

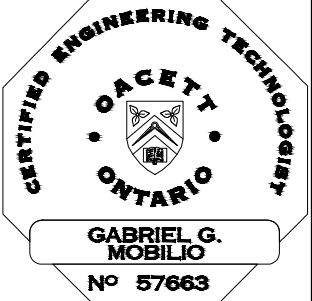
PROJECT No.
 22-298

SCALE:
1:500

DRAWING No.
E101



**CONSULTING ENGINEERS
LIGHTING - ELECTRICAL**
 595 CITYVIEW BLVD, SUITE 204/205
 VAUGHAN, ON, CANADA L4H 3M7
 Tel: (905)417-6881 Fax:
 (905)417-6882
 www.e-lumen.ca



Brutto Consulting
 113 Miranda Avenue, Toronto, ON M6B 3W8
 Tel: (647) 274-8031 Email: f.fiorani@bruttoconsulting.ca

No.	DATE	ISSUE/REV.
4.		
3.		
2.	2023/10/04	ISSUED FOR SPA
1.	2023/09/13	ISSUED FOR SPA

PROJECT
100 STOKES TRAIL

TITLE:
SITE PLAN ANALYSIS

PROJECT No.
22-298

SCALE:
1:500

DRAWING No.
E102

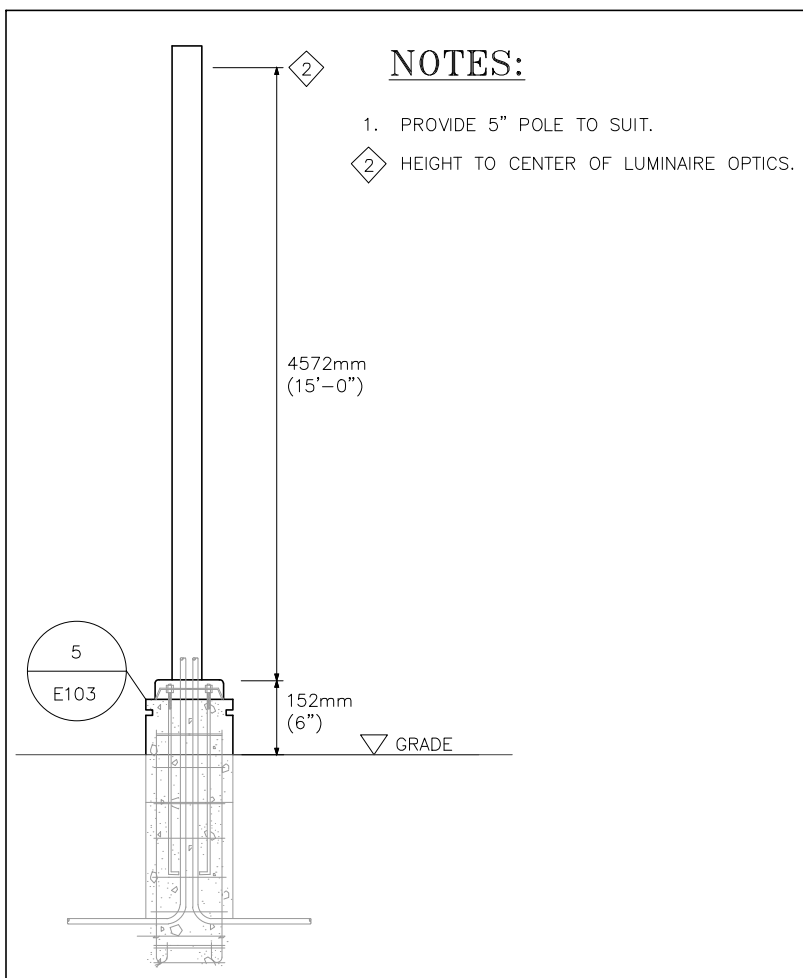
LUMINAIRE SCHEDULE							
SYMBOL	LABEL	ARRANGEMENT	LUMENS	LLF	MANUFACTURER	WATTAGE	MOUNTING
○	LA1	POLE MOUNTED	10851	0.90	SALEX: GARDCO ECF-S-64L-900-NW-G2-RCL C/W BACKLIGHT CONTROL AND REQUIRED POLE AND ACCESSORIES.	175	15'-6"
○	LA2	POLE MOUNTED	9756	0.90	SALEX: GARDCO ECF-S-32L-1A-NW-G2-BLC C/W REQUIRED POLE AND ACCESSORIES.	104	15'-6"
○	LA3	POLE MOUNTED	10853	0.90	SALEX: GARDCO ECF-S-64L-900-NW-G2-LCL C/W REQUIRED POLE AND ACCESSORIES.	175	15'-6"

STATISTICS						
DESCRIPTION	UNITS	AVG	MAX	MIN	MAX/MIN	AVG/MIN
LIGHT TRESSPASS	LUX	0.02	2.4	0.0	N/A	N/A
SITE	LUX	204.02	327.9	110.5	2.97	1.85
PROPERTY LINE WEST	LUX	0.79	3.3	0.0	N/A	N/A

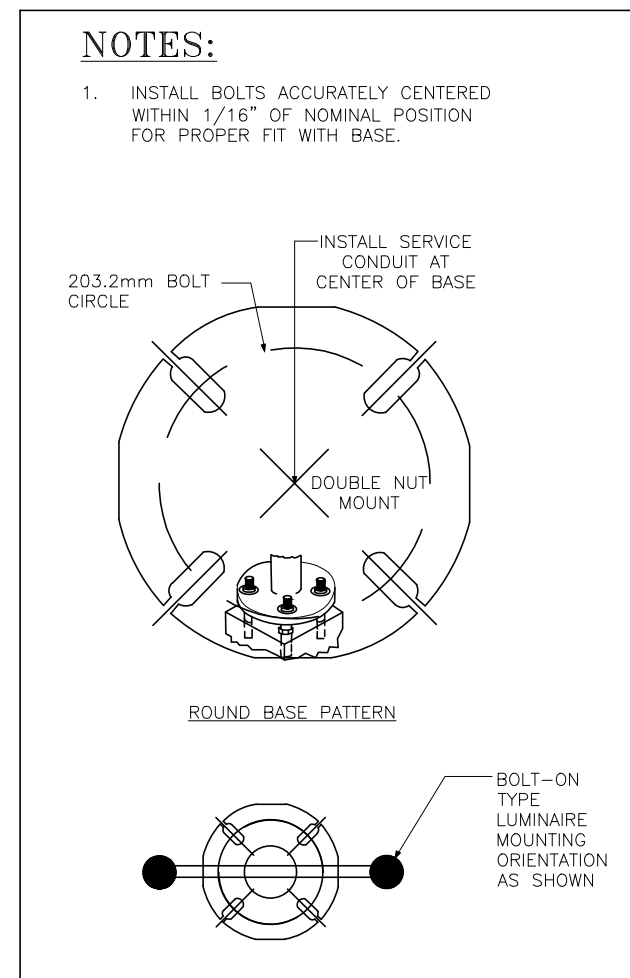


2 LUMINAIRE TYPE 'LA1', LA2 & 'LA3'
E103 SCALE: N.T.S.

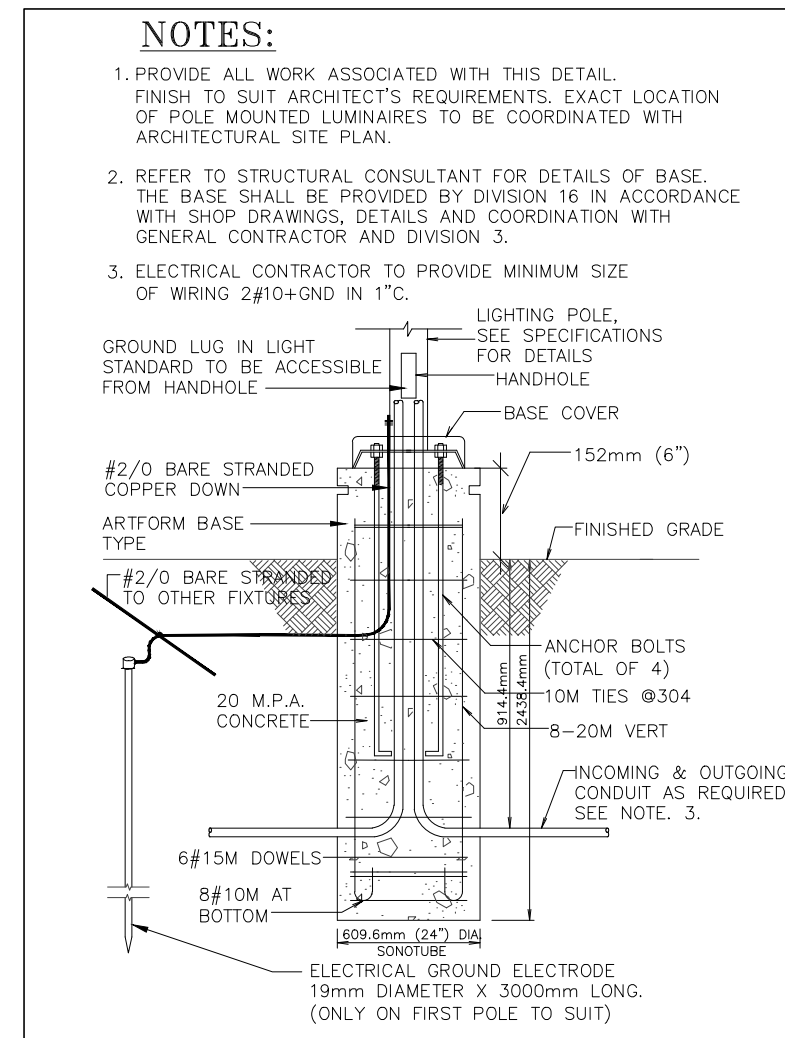
1 LUMINAIRE SCHEDULE & CALCULATION
E103 SCALE: N.T.S.



3 POLE DETAIL
E103 SCALE: N.T.S.

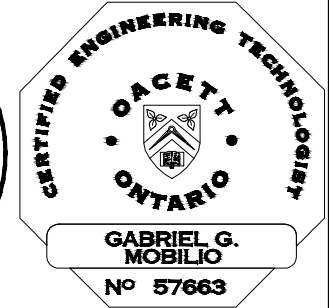
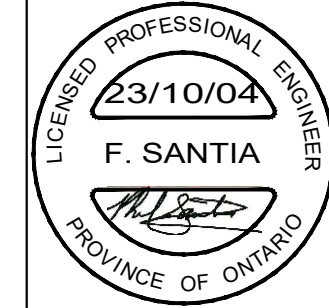


4 POLE ANCHOR DETAIL
E103 SCALE: N.T.S.



5 POLE BASE DETAIL
E103 SCALE: N.T.S.

Lumen CONSULTING ENGINEERS
LIGHTING - ELECTRICAL
595 CITYVIEW BLVD, SUITE 204/205
VAUGHAN, ON, CANADA L4H 3M7
Tel: (905)417-6881 Fax:
(905)417-6882
www.e-lumen.ca



Brutto Consulting
113 Miranda Avenue, Toronto, ON M6B 3W8
Tel: (647) 274-8031 Email: f.fiorani@bruttoconsulting.ca

4.		
3.		
2.	2023/10/04	ISSUED FOR SPA
1.	2023/09/13	ISSUED FOR SPA
No.	DATE	ISSUE/REV.

PROJECT
100 STOKES TRAIL

TITLE:
SITE PLAN DETAILS

PROJECT No.
22-298

SCALE:
AS SHOWN

DRAWING No.
E103