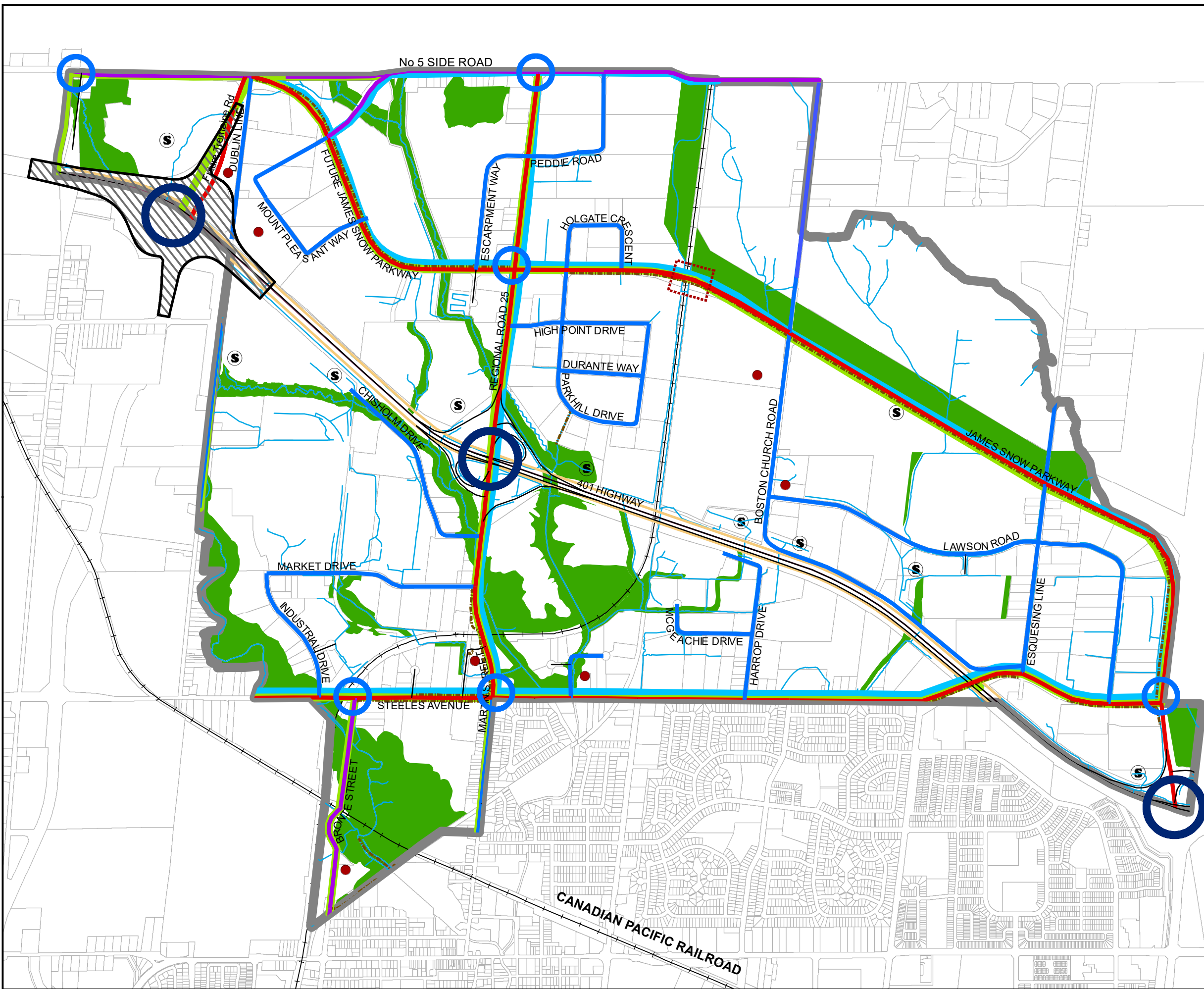


TOWN OF MILTON OFFICIAL PLAN

Schedule C.2.A

MILTON 401 INDUSTRIAL/ BUSINESS PARK SECONDARY PLAN

STRUCTURE PLAN



- 401 LANDSCAPE CORRIDOR
- GATEWAY STREET/
ENHANCED STREETScape DESIGN
- ON-STREET BIKE SYSTEM
- MAJOR ARTERIAL
- MINOR ARTERIAL
- COLLECTOR
- LOCAL ROADS
- TRAIL
- PRIMARY GATEWAY
- SECONDARY GATEWAY
- STORMWATER MANAGEMENT POND
- CHARACTER BUILDING
- RAILWAY CROSSING
- PLANNED 401 INTERCHANGE
- NATURAL HERITAGE SYSTEM
- SECONDARY PLAN BOUNDARY
- WATERWAY
- RAILWAY

0 0.15 0.3 0.45 0.6 Kilometres



This Schedule Forms Part Of The
Official Plan And Should Be Read
Together With The Text.

Copyright 2022: Town of Milton, Teranet inc.

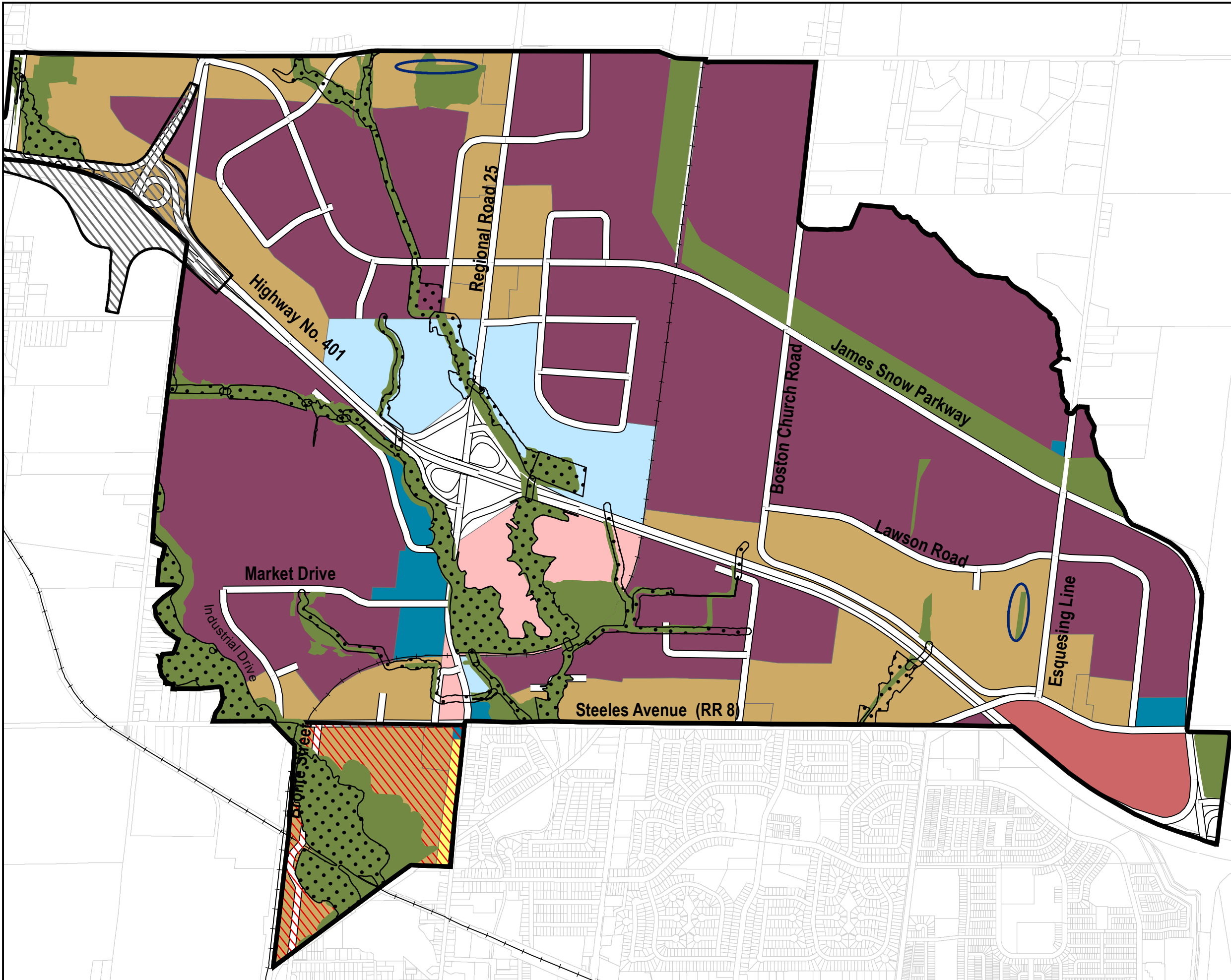
Last updated February, 2022
Office Consolidation January 2024

TOWN OF MILTON OFFICIAL PLAN

Schedule C.2.B

MILTON 401 INDUSTRIAL/ BUSINESS PARK SECONDARY PLAN

LAND USE PLAN



-  Railway
-  Planned 401 Interchange
-  Regulatory Flood Plain
-  Natural Heritage System
-  Institutional Area
-  Business Park Area
-  Business Commercial Area
-  Industrial Area
-  Office Employment Area
-  Residential
-  Major Commercial Centre
-  Residential Special Policy Area
-  Special Study Area

0 0.15 0.3 0.45 0.6 Kilometres



This Schedule Forms Part Of The
Official Plan And Should Be Read
Together With The Text.

Copyright 2022: Town of Milton, Teranet inc.

Last updated February, 2022
Office Consolidation January 2024