

# TOWN OF MILTON OFFICIAL PLAN Schedule E Transportation Plan

- TOWN OF MILTON BOUNDARY
- URBAN EXPANSION AREA BOUNDARY
- URBAN AREA (see Schedule 'F')
- COLLECTOR
- LOCAL
- MAJOR ARTERIAL
- MINOR ARTERIAL
- MULTI-PURPOSE ARTERIAL
- PLANNED 401 INTERCHANGE
- PROVINCIAL FREEWAY
- PROVINCIAL HIGHWAY
- RAILWAY
- EXISTING URBAN AREA BOUNDARY
- NIAGARA ESCARPMENT EDGE
- WATERCOURSE



NAD 1983 - UTM Zone 17N

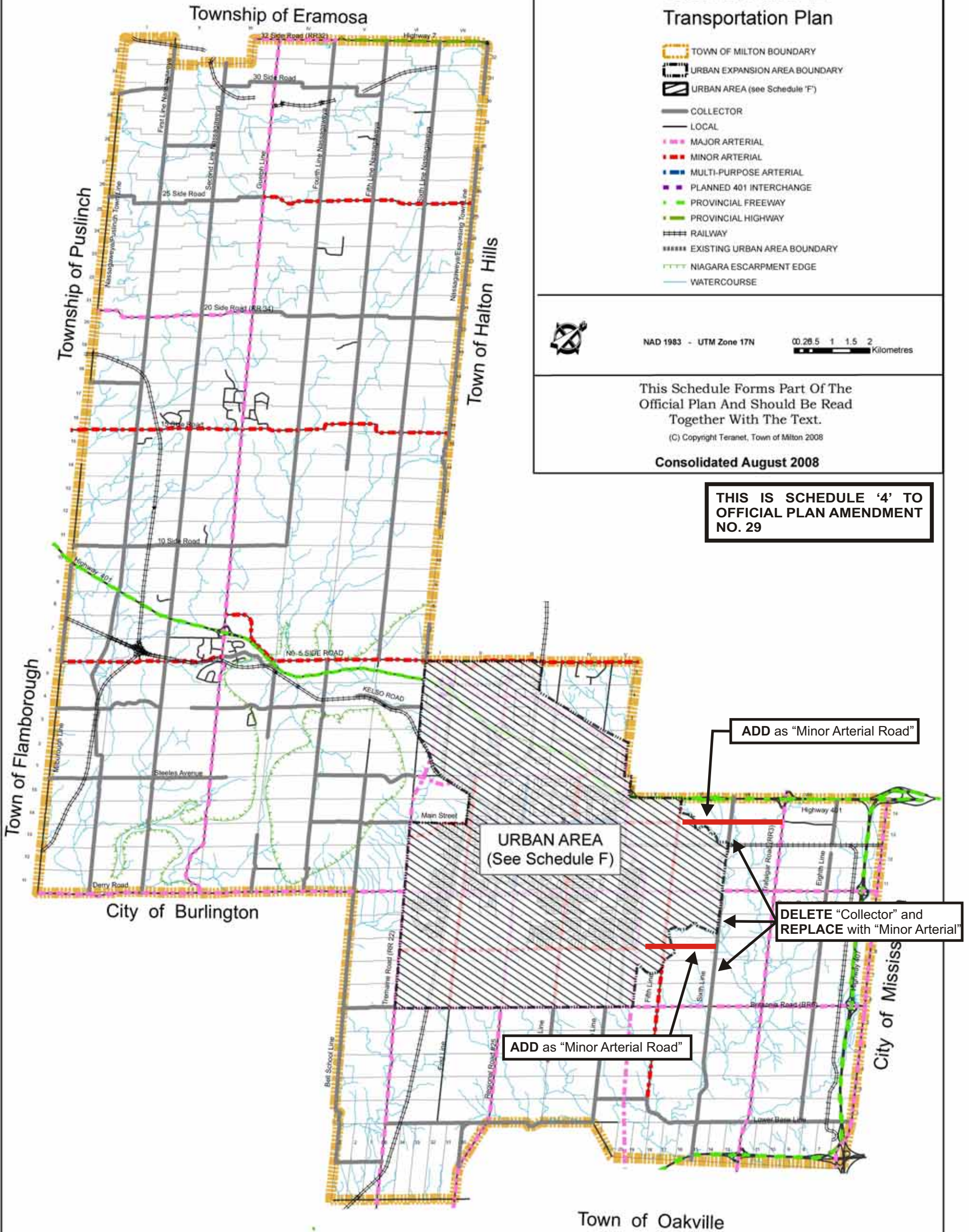
0 0.25 0.5 1 1.5 2 Kilometres

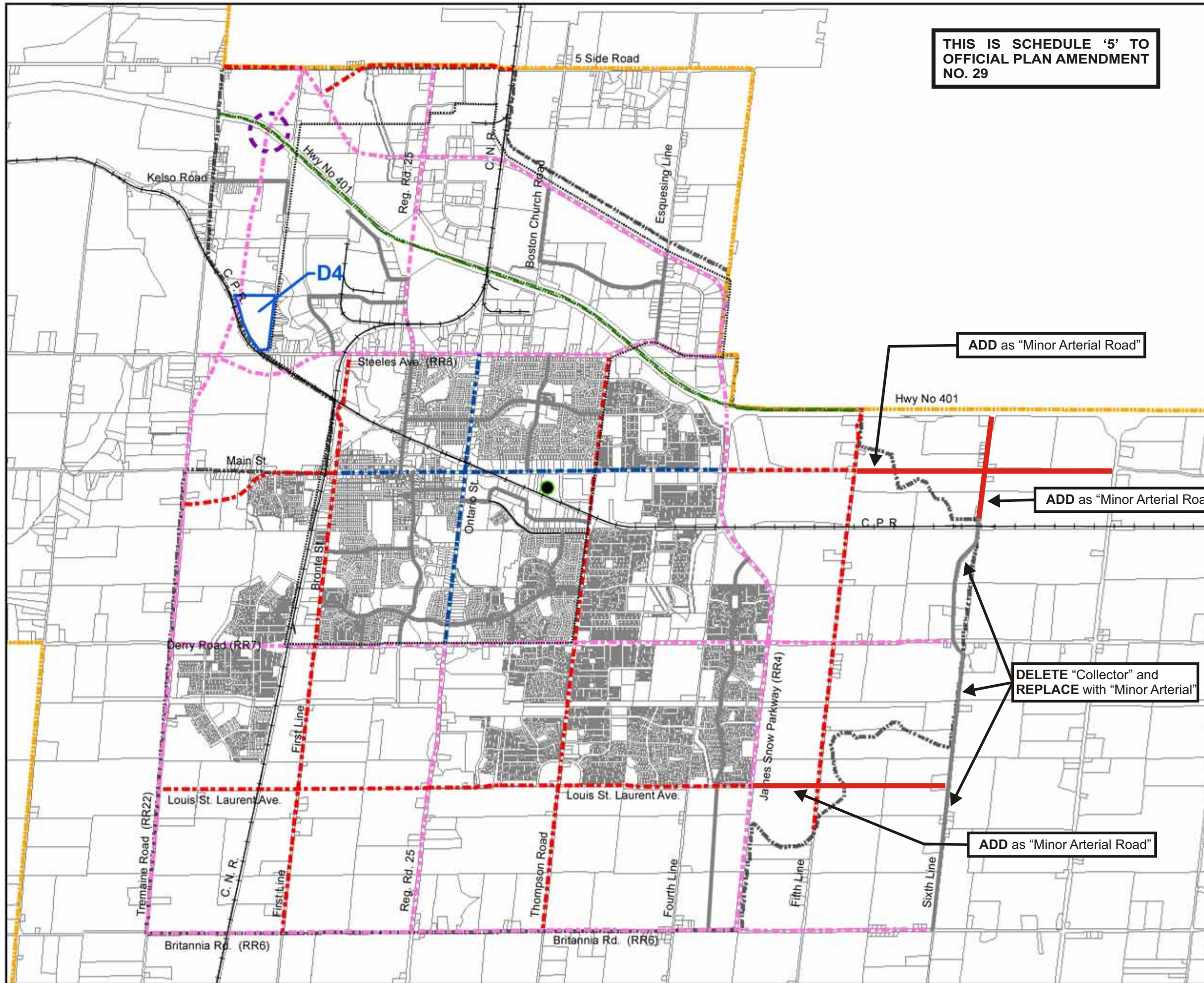
This Schedule Forms Part Of The  
Official Plan And Should Be Read  
Together With The Text.

(C) Copyright Teranet, Town of Milton 2008

Consolidated August 2008

**THIS IS SCHEDULE '4' TO  
OFFICIAL PLAN AMENDMENT  
NO. 29**





# TOWN OF MILTON OFFICIAL PLAN

## Schedule F Urban Area Transportation Plan

- TOWN OF MILTON BOUNDARY
- RAILWAY
- URBAN EXPANSION AREA
- COLLECTOR
- LOCAL
- MAJOR ARTERIAL
- MINOR ARTERIAL
- MULTI-PURPOSE ARTERIAL
- PLANNED 401 INTERCHANGE
- PROVINCIAL FREEWAY
- DEFERRED AREAS
- EXISTING URBAN AREA
- COMMUTER RAIL STATION



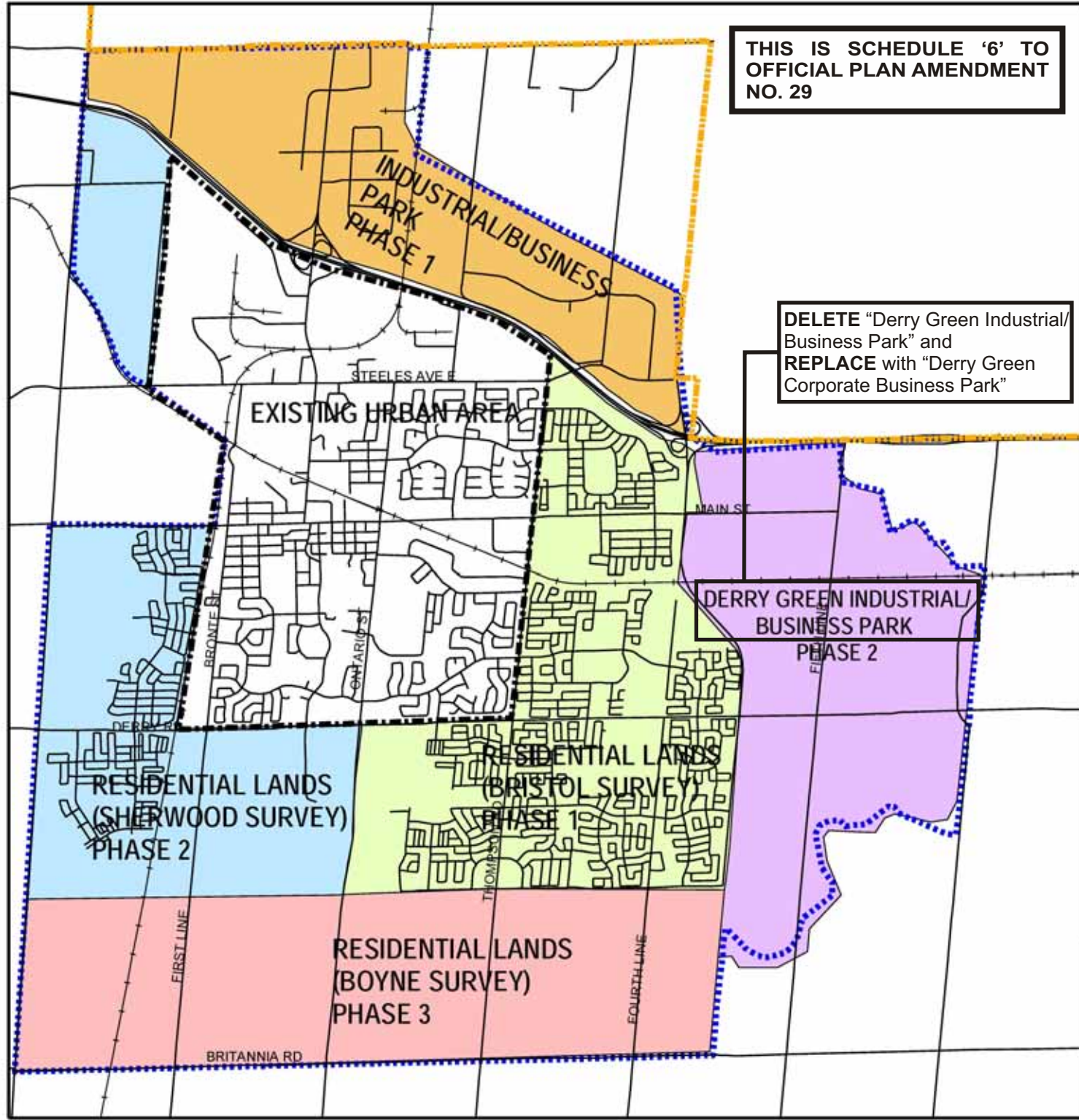
This Schedule Forms Part Of The  
Official Plan And Should Be Read  
Together With The Text.  
(C) Copyright Teranet, Town of Milton 2008

Consolidated August 2008








THIS IS SCHEDULE '6' TO  
OFFICIAL PLAN AMENDMENT  
NO. 29

# TOWN OF MILTON OFFICIAL PLAN

## Schedule H Phasing of Urban Expansion



DELETE "Derry Green Industrial/  
Business Park" and  
REPLACE with "Derry Green  
Corporate Business Park"

-  TOWN OF MILTON BOUNDARY
-  OLD URBAN AREA (Before Expansion)
-  URBAN EXPANSION AREA
-  RAILWAY
-  Non-Residential I
-  Non-Residential Phase II
-  Residential Phase I
-  Residential Phase II
-  Residential Phase III

